



Beetham Tower, Deansgate, Manchester

£1,650 PCM

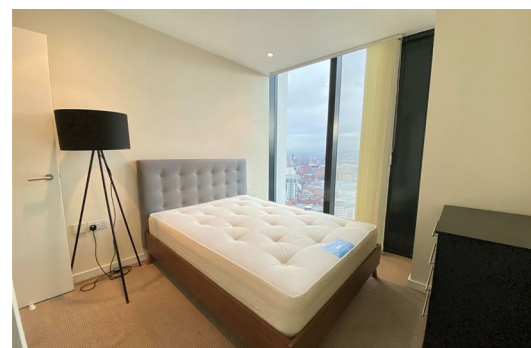
A rare opportunity to rent a fully furnished two bedroom, one bathroom corner apartment in one of Manchester's most prestigious addresses.

This southwest facing apartment has incredible views spanning from the Peak District across South Manchester, out towards Liverpool and even as far as Pendle Hill. This 39th floor apartment has two double bedrooms, with fitted wardrobes and a super-stylish master bathroom. In the bathroom you'll find state-of-the-art features including a heated towel rail, swanky built-in mirrored cupboards and a full-height tiled ceiling - truly a stylish force to be reckoned with.

The open-plan living area is a welcoming space that is complimented by stunning views. The kitchen comprises built-in appliances including a washer/dryer, dishwasher, fridge and separate freezer. The halogen hob, electric oven and extractor fan are conveniently located on a central island.

This property comes with a secure designated parking space which is accessed via a remote key fob entry. You'll also benefit from a 24 concierge. This one definitely has to be seen to be appreciated, so don't hesitate to get in touch with us.

Available 13th March 2024
12 month tenancy.
Deposit £1900.
Council Tax Band E





Energy Efficiency Rating		Environmental Impact (CO ₂) Rating	
Current	Target	Current	Target
81	81	83	83

Ascend
Built on higher standards